



# DUAL HEAD POCKET ULTRASOUND

Convex

Cardiac

Linear

3 in 1 Color Doppler

C10RL PRO



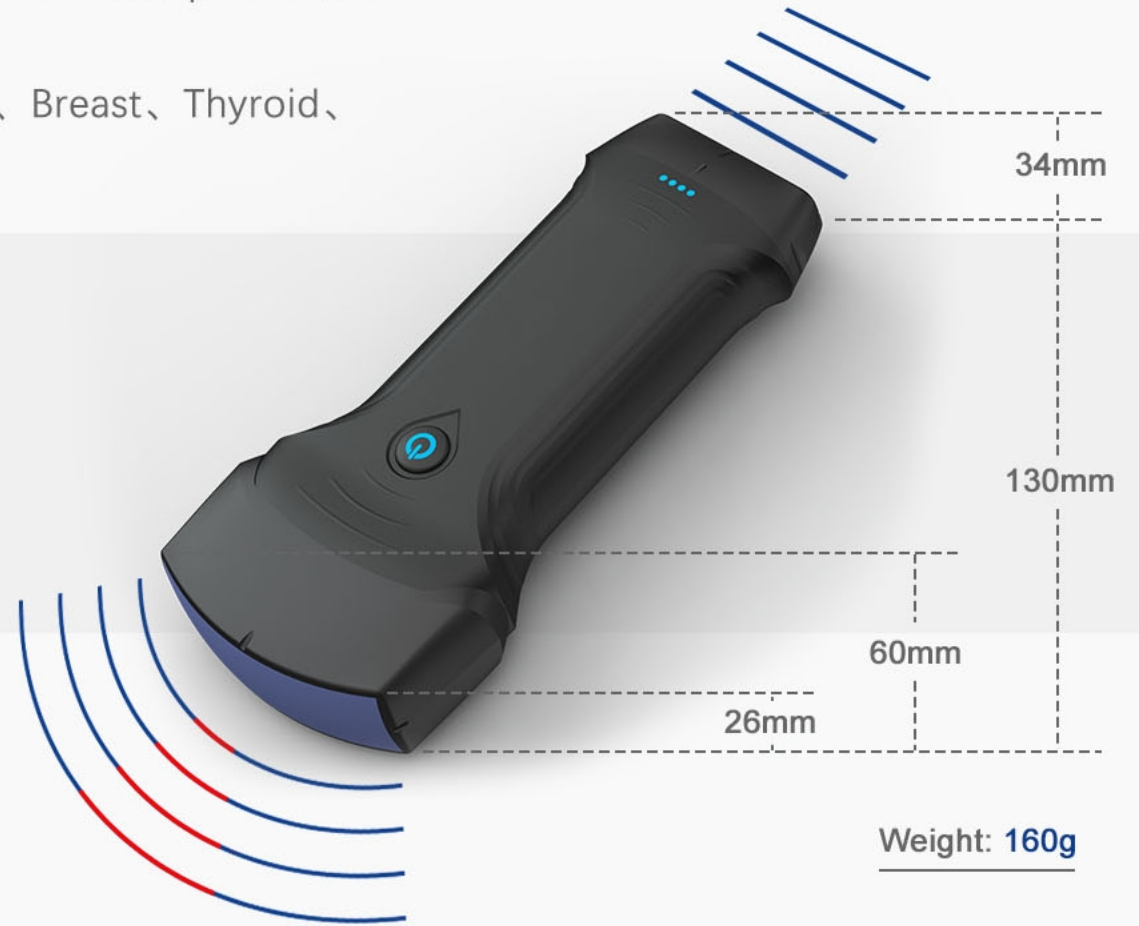
# 3 IN 1

Windows | Android | IOS

You can scan anybody anytime anywhere conveniently, such as a clinic, hospital ward, emergency room, or operating theater. Application:

Abdomen、Obstetrics/ Gynecology、Cardiac、Kidney、Urology、Breast、Thyroid、MSK、Vascular、Pediatrics、Carotid

	Convex	Cardiac	Linear
Freq	3.2/5MHz	2.5/5MHz	7.5/10MHz
Depth	90-305mm	90-160mm	20-100mm
Footprint/Radius	R60	R60	L34



# FRIENDLY OPERATING INTERFACE



## Datasheet

You can save the scanned picture, video, report.



## Multiple modes

Switch between B, B+B, B/M, Color, PW, PDI, B+Color+PW.



## Print

The imaging or report of patient can be printed by printer.



## Dual screen

Analyze and compare imaging in any 2 modes.



## Annote

Doctors can add markers or notes on the imaging.



## Measure magnify

Measure the boundary of smaller target more accurately.



- Download Free “MYUSG” from App Store / GooglePlay.

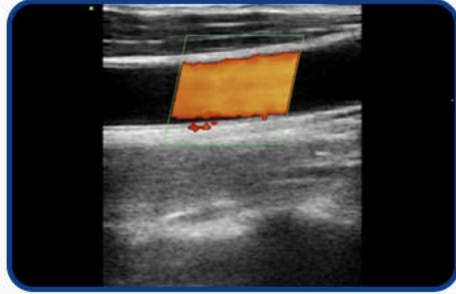
- **Compatible:**

IOS 11.0 or later: iphone7(plus)~iphone17 series or later / ipad Air 2~ipad mini 5~ipad Pro series or later  
Android 14 or later  
Windows 11 version PC

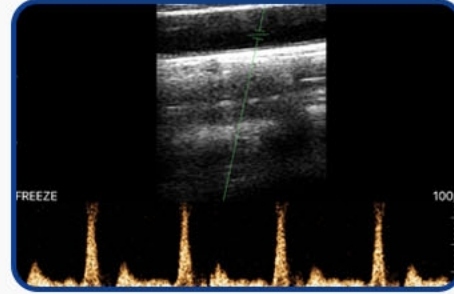
# CLINICAL IMAGE



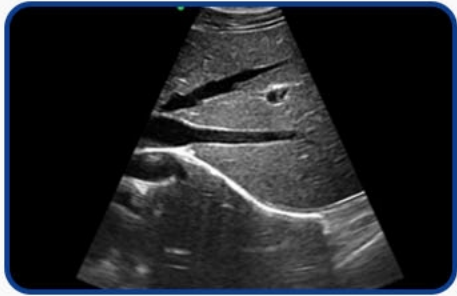
Thyroid C Mode



Carotid C Mode



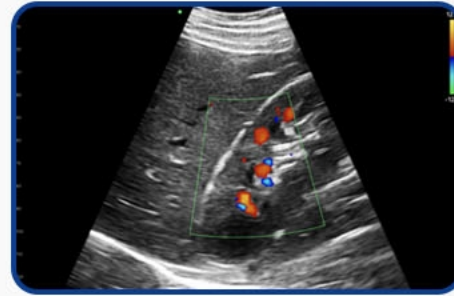
Vascular PW Mode



Liver B Mode



Cardiac C Mode



Kidney C Mode





# COMMON SPECS



**Element:** 192.

**Connection:** USB&WiFi.

**Channel:** 64.

**Display mode:** B, B/M, Color, PW, PDI, B+Color+PW.

**Presets:**

Abdomen, Gynecology, Obstetric, Cardiac, Urology, Kidney, Lung, User1, User2.



**Image frame rate:** 24f/s

**Cine play:** 100/200/500/1000

Auto play, Manual play.

**Image save:** jpg, avi, Mp4 and DICOM

**WiFi type:** Built-in WiFi

802.11g/20MHz/5G/450Mbps.

**USB type:** Dual USB-C

Host:Android/IOS/Windows Tablet

Smart phone, PC.



**Measurement:**

**B:** Length, Area/Circumference, Angle, Trace, Distance GA(CRL,BPD,GS,FL,HC, AC)EFW(BPD,FL), volume.

**B+M:** Heart rate, Time, Distance, LVID (LVIDd, LVIDs, EF, SV).

**B+PW:** Velocity, Heart rate(2), S/D, Depth.

**Automatic Vessel Flow Measure:**

PS, ED, TAMAX, TAMEAN, PI, RI, S/D, DIAM, FL.



[www.kontedmed.com](http://www.kontedmed.com)



[info@kontedmed.com](mailto:info@kontedmed.com)



Room 111, Building 3, No.27 Yongwang Road, Zhongguancun Science and Technology Park Biomedical Base, Daxing District, Beijing.